

HIGHLAND OAKS

8-UNIT BUILDING

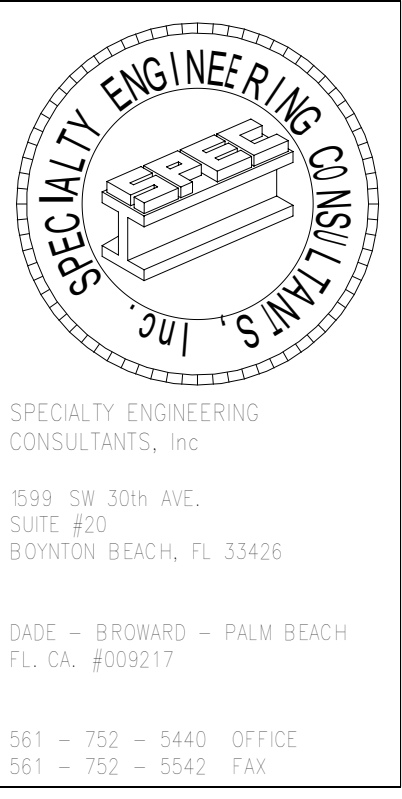
SHEET INDEX			
	COVER SHEET		
A-1	BUILDING PLANS		
A-2	ELEVATION TYPE A		
A-3	ELEVATION TYPE B		

Dewey A.
LeBlanc

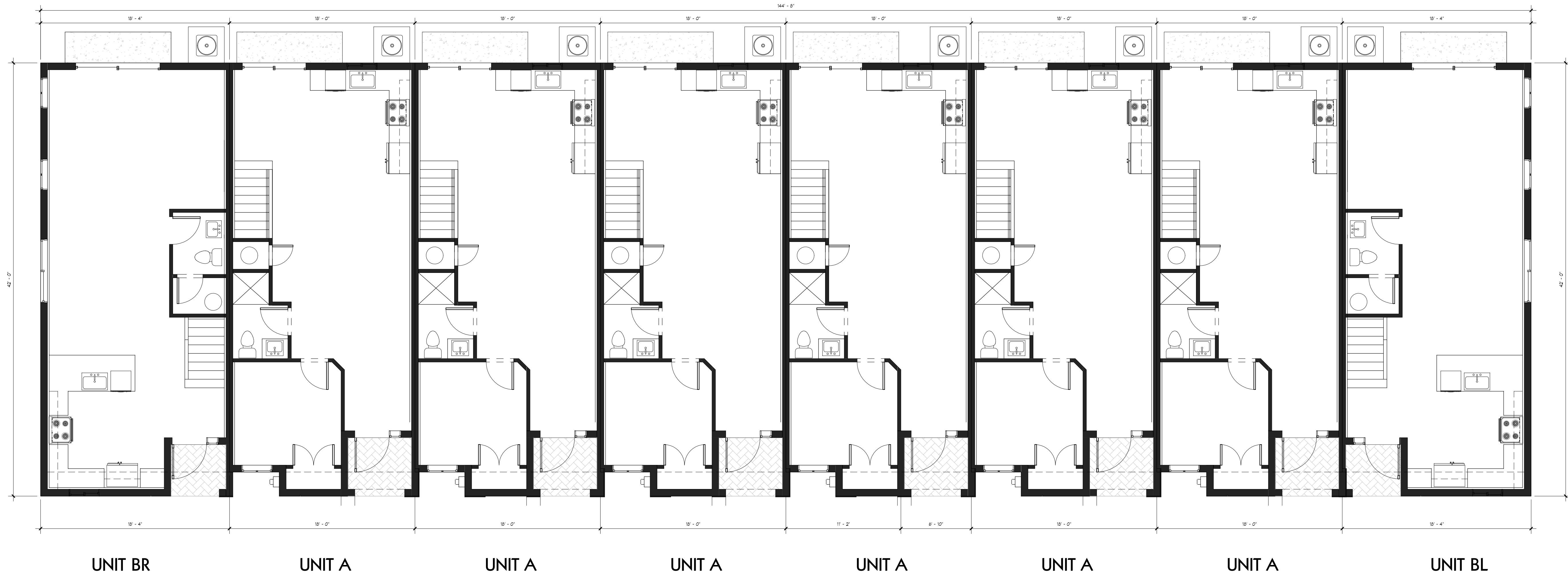
Digitally signed by Dewey A.
LeBlanc
DN: c=US, st=Florida, l=Boynton
Beach, o=Specialty Engineering
Consultants, Inc., cn=Dewey A.
LeBlanc, email=Adam@specsfc.com
Date: 2021.03.03 15:57:30 -05'00'

SITE & AREA CALCULATIONS	
TOTAL BUILDING AREA	11,086 SQ. FT.
PROPOSED A/C AREA	11,359 SQ. FT.
PROPOSED NON A/C AREA	264 SQ. FT.

B L D G . D E S I G N D A T A	
CODES : FLORIDA RESIDENTIAL BLDG. CODE 2020 EDITION NFPA FL FIRE PREVENTION CODE 7TH ED. NEC NATIONAL ELECTRIC CODE 2017 CARBON MONOXIDE DETECTORS REQUIREMENTS PER FL ADMINISTRATIVE CODE RULE 9B-3.0472 ACI 318-14; ASTM 47th ED.	
DESIGN CRITERIA	
COUNTY	POMPANOB EACH, FL
OCCUPANCY GROUP	R-3
NUMBER OF STORIES	2
BUILDING CATEGORY	ENCLOSED
BASIC WIND SPEED, mph	170
WIND IMPORTANCE FACTOR	1.0
WIND EXPOSURE CATEGORY	C
VELOCITY PRESSURE	28.44 PSF
INTERNAL PRESSURE COEFFICIENT	+/- .18
MINIMUM SOIL PRESSURE, psf	2500
FLOOR LOADS (LIVE & DEAD)	55
ROOF DEAD LOAD, psf	20
ROOF LIVE LOAD, psf	30
CONTRUCTION TYPE	"III B"UNPROTECTED



8-UNIT BUILDING



UNIT BR

UNIT A

UNIT A

UNIT A

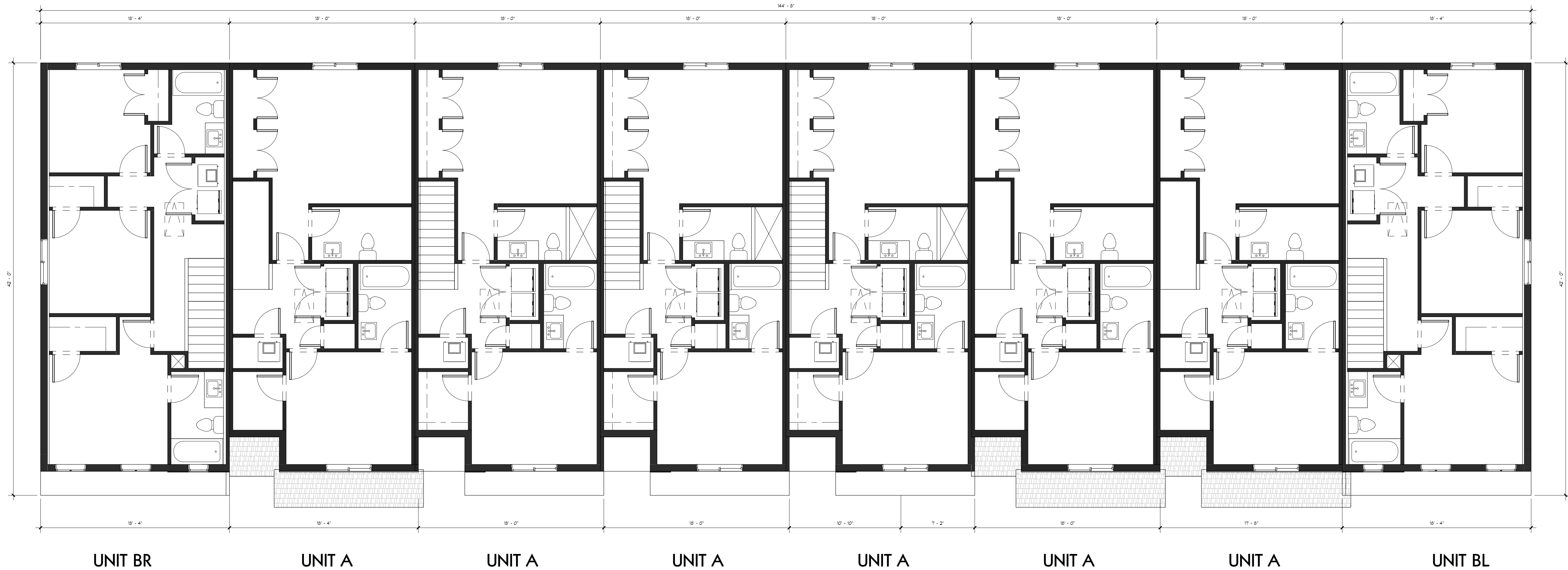
UNIT A

UNIT A

UNIT A

UNIT BL

① 1st Flr
3/16" = 1'-0"



UNIT BR

UNIT A

UNIT A

UNIT A

UNIT A

UNIT A

UNIT A

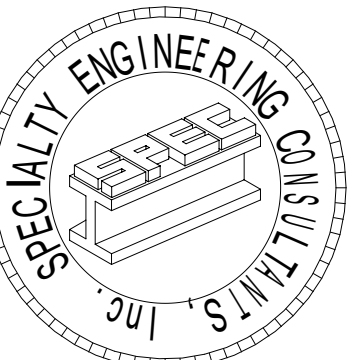
UNIT BL

② 2nd Flr
3/16" = 1'-0"

BUILDING PLANS

SHEET INFORMATION
8- UNIT
BUILDING

PROJECT INFORMATION
HIGHLAND OAKS
POMPANO BEACH,
FLORIDA



SPECIALTY ENGINEERING
CONSULTANTS, Inc.

1599 SW 30th AVE.
SUITE #20
BOYNTON BEACH, FL 33426

DADE - BROWARD - PALM BEACH
FL, CA. #009217

561 - 752 - 5440 OFFICE
561 - 752 - 5542 FAX

FILE NAME:

SCALE

DATE 2/21/2021

RVD. BY Checker

DRWN. BY Author

REVISION SCHEDULE
NO DATE Description

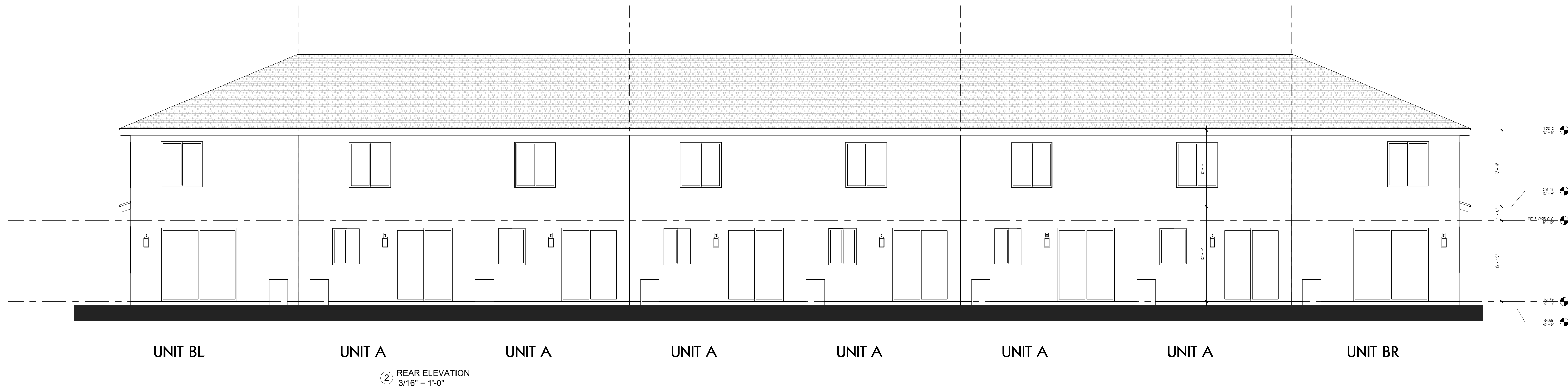
Dewey
A.
LeBlanc
c

SEAL
D. ADAM LeBLANC, PE FL #77012

SHEET #

AAC

PZ13-12000041
5/4/21



UNIT BL

UNIT A

UNIT A

UNIT A

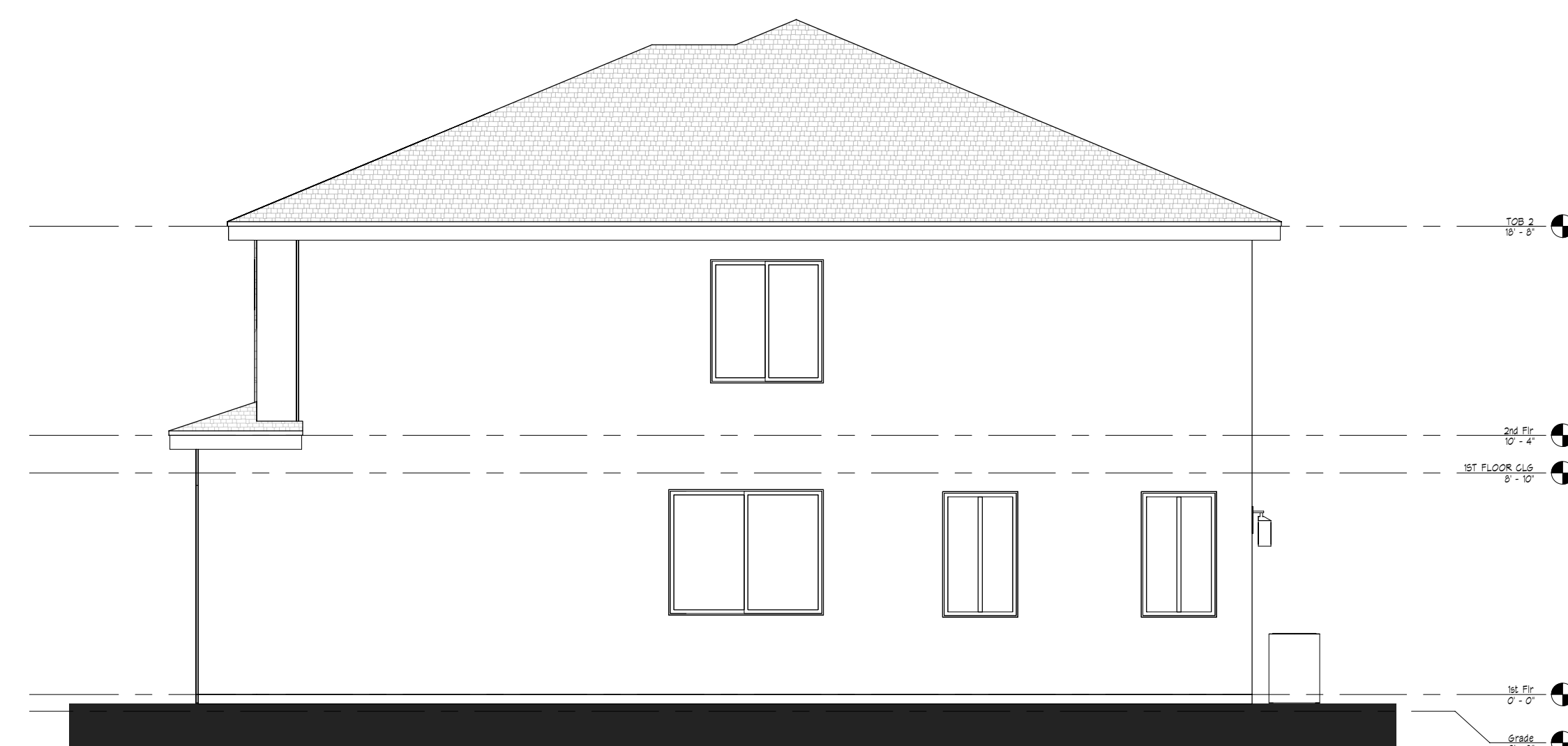
UNIT A

UNIT A

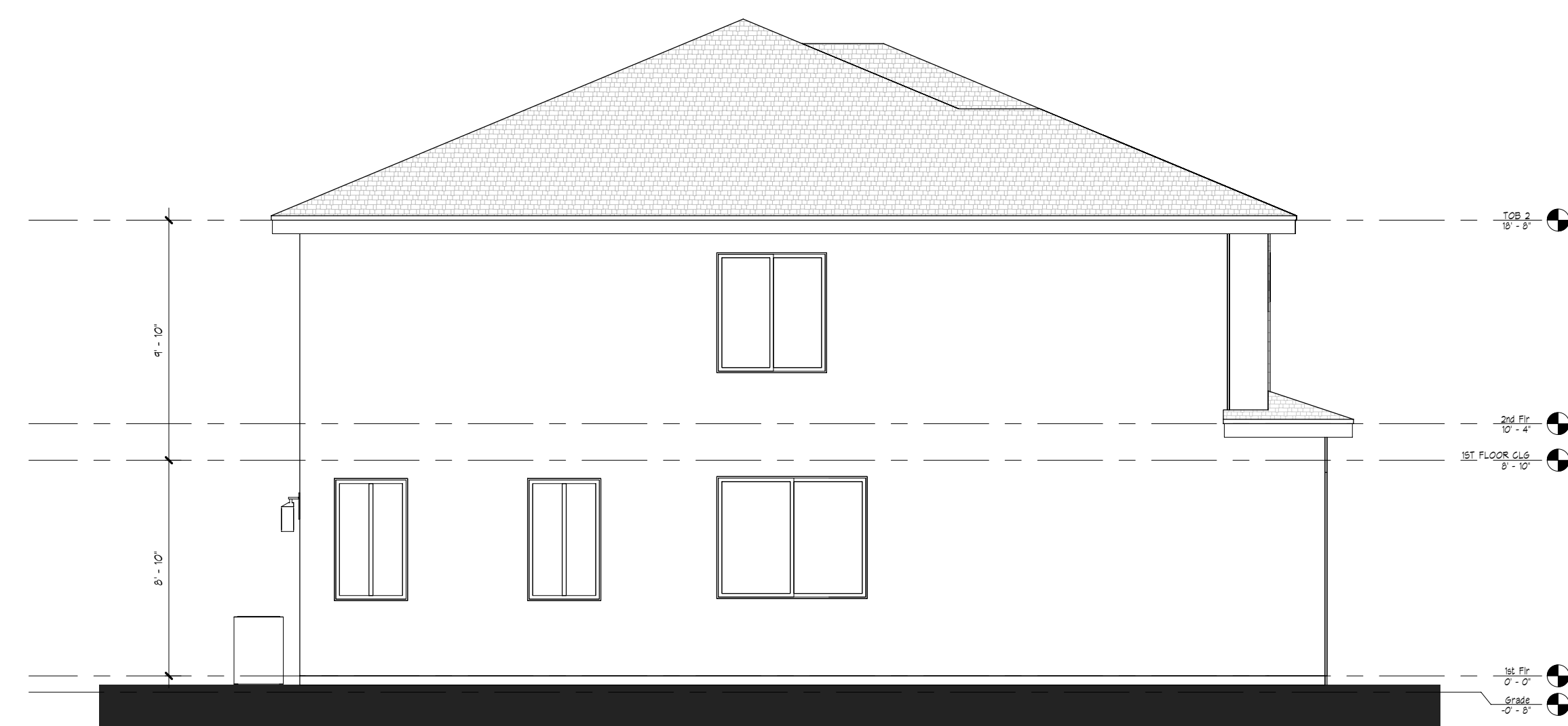
UNIT A

UNIT BR

2 REAR ELEVATION
3/16" = 1'-0"



4 RIGHT SIDE
3/16" = 1'-0"



3 LEFT SIDE
3/16" = 1'-0"



UNIT BR

UNIT A

UNIT A

UNIT A

UNIT A

UNIT A

UNIT A

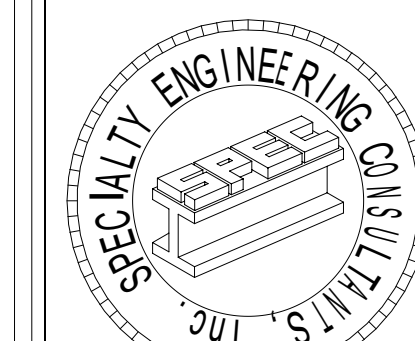
UNIT BL

1 FRONT ELEVATION
3/16" = 1'-0"

ELEVATIONS

SHEET INFORMATION
8- UNIT
BUILDING
TYPE B

PROJECT INFORMATION
HIGHLAND OAKS
POMPAHO BEACH
FLORIDA



SPECIALTY ENGINEERING
CONSULTANTS, Inc.

1599 SW 30th AVE.
SUITE #20
BOYNTON BEACH, FL 33426

DADE - BROWARD - PALM BEACH
FL. CA. #009217

561 - 752 - 5440 OFFICE
561 - 752 - 5542 FAX

FILE NAME:

SCALE

DATE 2/21/2021

RVD. BY Checker

DRWN. BY Author

REVISION SCHEDULE
NO DATE Description

Dewey
A.
LeBlanc
C

SEAL
D. ADAM LeBLANC, PE FL #77012

SHEET #

AAC
PZ13-12000041
5/4/21